

144 High Street,
Stockton-on-Tees, County Durham TS18 1LX
Freehold Retail Investment

Lot 59

£103,250 per annum
exclusive



Tenancy and accommodation

Floor	Use	Floor Areas (Approx)	Tenant	Term	Rent p.a.x.	Reversion
Ground	Retail	790.90 sq m (8,513 sq ft)	MATCHURBAN (1)	15 years from 31/07/2005 on a full repairing and insuring lease	£103,250	30/7/2020
First	Ancillary	641.20 sq m (6,902 sq ft)				
Second	Ancillary	91.71 sq m (987 sq ft)				
Total		1,523.81 sq m (16,402 sq ft)			£103,250	

(1) Matchurban were incorporated in 1990 and are a subsidiary of DC Gaming Limited. The tenant is not currently in occupation of the property.

Key Details

- Prominently situated in the town centre 100 metres from Wellington Square Shopping Centre
- Substantial retail unit with significant frontage
- Nearby occupiers include Marks & Spencer, H Samuel, New Look, The Money Shop, Greggs and Superdrug

Location

Miles: 3 miles west of Middlesbrough
30 miles south of Newcastle
43 miles north of York

Roads: A66, A19, A1

Rail: Stockton Station, Thornaby Station

Air: Durham Tees Valley Airport

Situation

The property is prominently situated on the west side of High Street, close to the main entrance to Wellington Square Shopping Centre. Nearby occupiers include Marks & Spencer, H Samuel, New Look, The Money Shop, Greggs and Superdrug.

Description

The property comprises a substantial retail unit with retail accommodation on the ground floor and ancillary accommodation on the first and second floors. The property benefits from a service entrance located on Ropery Street.

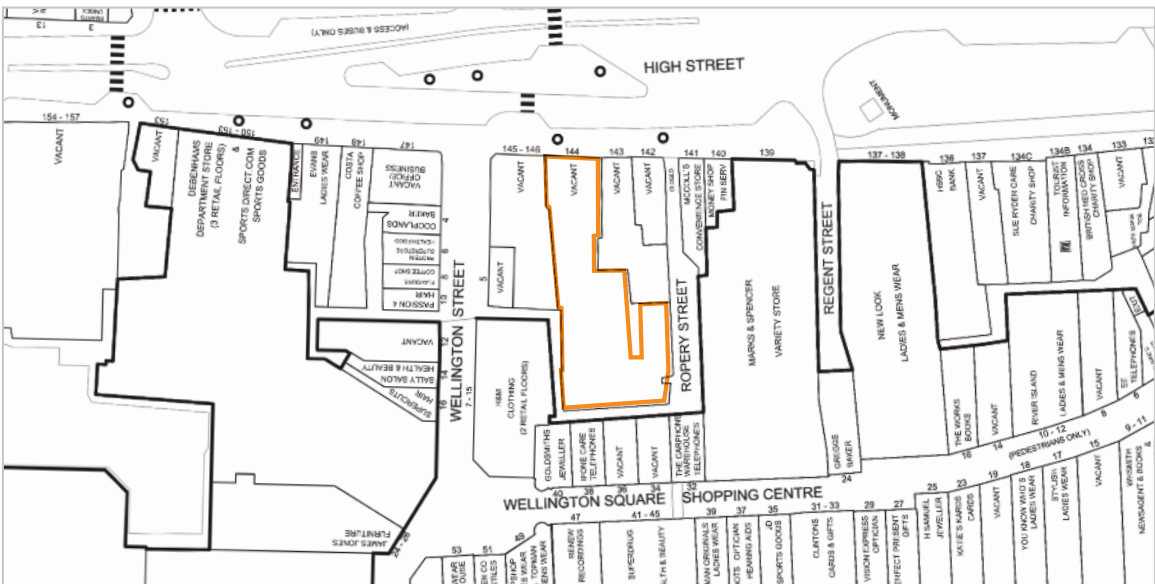
Tenure

Freehold.

VAT

VAT is applicable to this lot.

Six Week Completion



Copyright and confidentiality Experian, 2013. ©Crown copyright and database rights 2013 Ordnance Survey 100017316. For identification purposes only.

Acuitus
John Mehtab
+44 (0)20 7034 4855
john.mehtab@acuitus.co.uk

Acuitus
Billy Struth
+44 (0)20 7034 4854
billy.struth@acuitus.co.uk

Seller's Solicitors: Sintons Law
Mark Dobbin
+44 (0)191 226 7876
mark.dobbin@sintons.co.uk