

104 Hydepark Street,
Glasgow G3 8BW
 Heritable Industrial/Workshop Investment

Lot 54

£20,500 per annum
 exclusive



Tenancy and accommodation

Floor	Use	Floor Areas (Approx)	Tenant	Term	Rent p.a.x.
Ground	Workshop/ Offices	492.01 sq m (5,296 sq ft)	ATLAS HIRE DRIVE LIMITED (1)	5 years from 30/01/2014 on a full repairing and insuring lease (2)	£20,500
Total		492.01 sq m (5,296 sq ft)			£20,500

(1) Atlas Hire Drive offer a wide range of new campervans and motorhomes for hire in Scotland and operate from three other locations including Edinburgh City, Edinburgh City Airport and Glasgow Airport (Source: www.atlashiredrive.co.uk 21/09/2017).
 (2) The lease is full repairing and insuring, subject to a Schedule of Condition.

Key Details

- Headquarters of Atlas Hire Drive Limited
- Approximately 1/2 mile from Glasgow City Centre
- Established industrial location
- Nearby occupiers include Plumb Center, Avis Car Rental, Thrift Car Rental, Europcar and Budget Car & Van Rental
- VAT-free Investment

On Behalf of Trustees

Location

Miles: 1/2 mile from Glasgow City Centre
 47 miles west of Edinburgh
Roads: A8, A814, M8 (Junction 19)
Rail: Glasgow Queen Street Station
 Glasgow Central Station
Air: Glasgow International Airport

Situation

The property is situated in an established industrial area on the western side of Hydepark Street, within 1/4 of a mile of Junction 19 of the M8 Motorway. The renowned SSE Hydro Arena is located nearby, with a seated capacity of 12,000 it hosts a number of music and entertainment events. Other nearby occupiers include Avis Car Rental, Thrift Car Rental, Europcar, Budget Car & Van Rental and Metro Newspaper, with Nuffield Health Centre also located a short walk away.

Description

The property comprises a ground floor workshop with office accommodation. The property benefits from customer parking to the front.

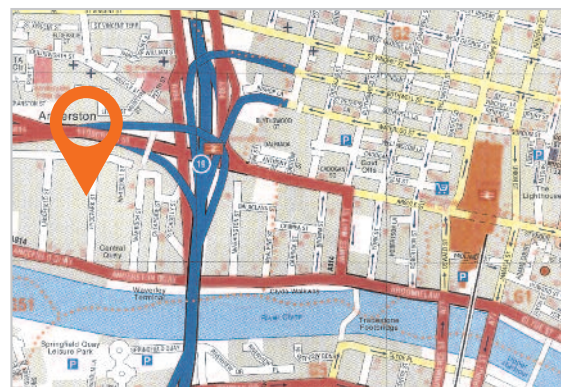
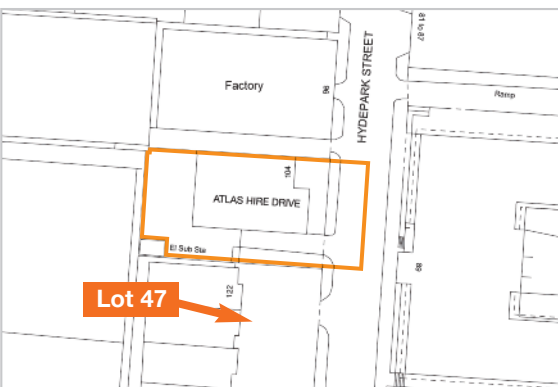
Tenure

Heritable (Scottish Equivalent of English Freehold).

VAT

VAT is not applicable to this lot.

Six Week Completion



Extract reproduced from the Ordnance Survey mapping with the permission of The Controller of Her Majesty's Stationery Office ©Crown Copyright 100020449. For identification purposes only.

Acuitus
 David Margolis
 +44 (0)20 7034 4862
 david.margolis@acuitus.co.uk

Acuitus
 Mhairi Jarvis
 +44 (0)131 552 5191
 mhairi.jarvis@acuitus.co.uk

Seller's Solicitors: Davidson Chalmers
 Louise Jones
 +44 (0)131 625 9191
 louise.jones@davidsonchalmers.com